

New England Collision Equipment, Inc

2008 price List

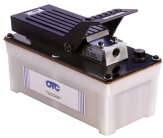
list
Price Our
Price



- 131-038-5000 D16 Draw Aligner
- 701 Pump,Hose, and Cylinder set 10 ton
- 205 Ram Adapter
- 930 Double grab hook
- 931 3/8" x 8ft chain w 1 grab hook
- 6250 Super alloy clevis slip hook
- 6220 Super alloy clevis grab hook
- Total



- 708 Ram half coupler
- 719 OTC 10 ton 10" stroke ram with coupler



- 4020 OTC Pump 10,000 psi
- 718 Hose half coupler
- 717 OTC 8 ft hose (10,000 psi)
- Total



- 131-038-5000 D16 Draw Aligner
- 701 Pump,Hose, and Cylinder set 10 ton
- 205 Ram Adapter
- 930 Double grab hook
- 931 3/8" x 8ft chain w 1 grab hook
- 6250 Super alloy clevis slip hook
- 6220 Super alloy clevis grab hook
- Total
- RADIO Adder for radio controlled hydraulics
- Total when purchased with BenchRack



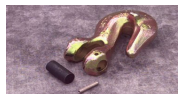
- 21M.01 Transmitter for pump
- 21.1 Battery charger with US 110v adapter



- GHBLI TX700 Pump, Transmitter, and Charger
- (Does not include ram, hose or couplings)**



- 930 Double grab hook



- 6220 Super alloy clevis grab hook



- 6250 Super alloy clevis slip hook



- 931 3/8" x 8ft chain w 1 grab hook

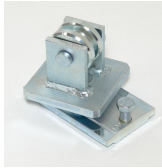
New England Collision Equipment, Inc

2008 price List

list
Price Our
Price



133-011-0087 T401 Ram support kit



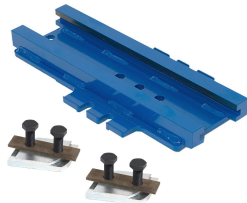
131-038-5230 D91 Down pull for BenchRack



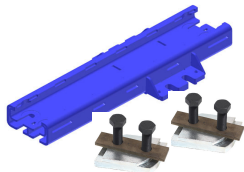
131-038-5220 D90 Down pull for Draw Aligner



133-011-0048 Chain Holder
131-100-7002 T-18 Hook



133-011-9218 B66-9 Track plate (old Style)
133-011-0081 B626 camlocks Qty. 2 @ 59.01 each



151-500-1210 E100 Tracking plate EVO
133-011-0081 B626 camlocks Qty. 2 @ 59.01 each



131-014-0300 Chief Track Plate-Bolt down \$485.92 Ea
133-011-0081 B626 camlocks Qty. 8 @ 59.01 each



132-013-0200 B86 Track Plate- Weld on \$428.27 Ea
133-011-0081 B626 camlocks Qty. 8 @ 59.01 each

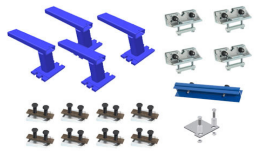


New England Collision Equipment, Inc
2008 price List

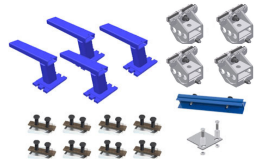
list
Price

Our
Price

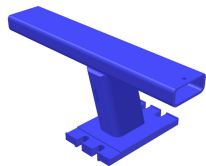
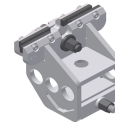
BenchRack Parts



133-013-0005 Bench Parts (B106/B39BR)



133-013-0003 Bench Parts (B110/B39BR)

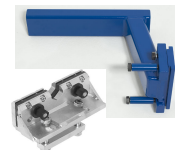


133-011-0090 B34BR Bench Mounting (Truck) each

Mark 6 Parts



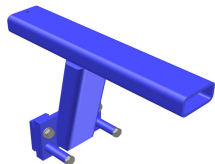
131-013-0350 Bench Parts (B106/B39MK)



131-013-0200 Bench Parts (B106/310)



131-013-0100 Bench Parts (B110/310)



131-115-8500 B34-M5 Bench Mounting (Truck) each



131-010-8300 **B106** Clamp each



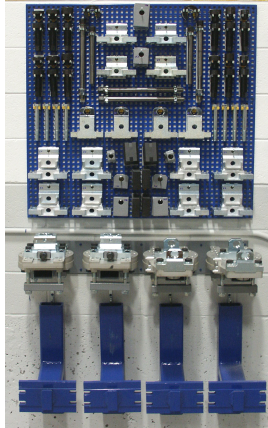
131-010-8350 **B110** Clamp each

New England Collision Equipment, Inc

2008 price List

list
Price

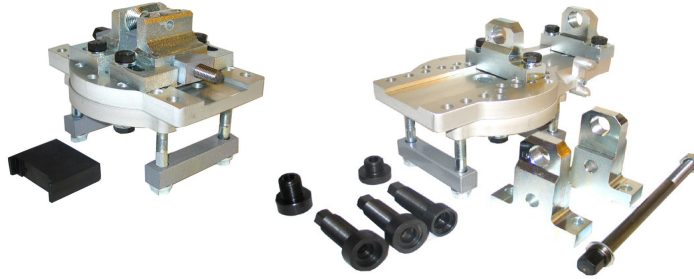
Our
Price



- 133-011-0315 B340BR Bench mounting kit
- 133-050-0301 B730 Truck clamping
- 131-087-4230 Tool Board Set B73 1+2 WSB230

NACE Truck Kit Promo:

When purchased with the following:
2 Tower BenchRack with Vision



- 133-050-0024 Pillar Jack Kit



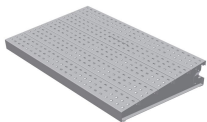
- 131-121-7002 T51 Jack Pad



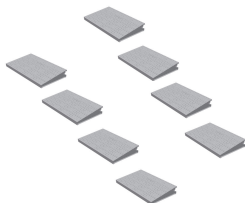
- 306 Selson (2 ton) air Jack 2 bag



- 305 Selson (2 ton) air Jack 3 bag



- 133-041-0257 Ramp section B345 (Reg.long)
- 133-041-0244 Ramp section B348 (Reg. short)



- 133-050-0011 Ramp Kit for BR4200
- 133-050-0009 Ramp Kit for BR5000
- 133-050-0008 Ramp Kit for BR5500

- 133-041-0305 WideRamp Kit for BR4200
- 133-041-0307 WideRamp Kit for BR5500
- 133-041-0308 WideRamp Kit for BR6300



- 133-011-0094 B57 Roll stop/loading trolley

New England Collision Equipment, Inc

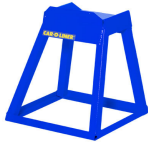
2008 price List

list
Price Our
Price



Pitwork old Installed in existing shop floor
Turnkey installation

Pitwork new Installed in new shop being built
Steel frame and piping only



131-111-5000 T56 Wheel stands (Hi Lift) price each
Set of 4



800-105 Rubber Lifting blocks price each
Set of 4



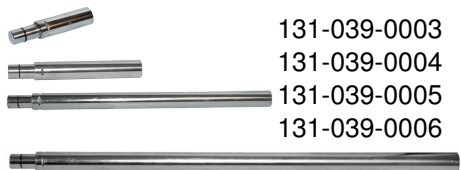
CMO #10 10 ton Hydraulic Kit
Made by CMO Italy



CMO #262 Snake Kit - Mini ram kit
Made by CMO Italy

Nike Extensions

Special order does not fit CMO kit



131-039-0003 D80-4 Extension Tube 125mm
131-039-0004 D80-5 Extension Tube 250mm
131-039-0005 D80-6 Extension Tube 590mm
131-039-0006 D80-7 Extension Tube 1000mm



131-039-0001 D80-2 Cylinder Support Plate



131-039-0007 D80-8 Chain Holder



60110 C731 Medium
60111 C732 Large
60112 C733 Extra Large

New England Collision Equipment, Inc
2008 price List

list
Price

Our
Price



131-010-8018 T10 pulling hook kit



131-100-8000 T11 Accessories for T10



131-113-0035 T815 Pulling clamp 10 ton



131-113-1000 T47 Pull clamp



131-113-0039 T819 Pulling Clamp



131-113-0040 T820 Arco Large



131-113-0041 T821 Arco small



131-112-5360 T95 Pull clamp



131-112-5331 T92R Volvo pulling clamp
 131-112-5332 T92L Volvo pulling clamp



131-112-5310 T91 Pulling clamp for volvo



131-112-5300 T90 Pulling clamp for volvo



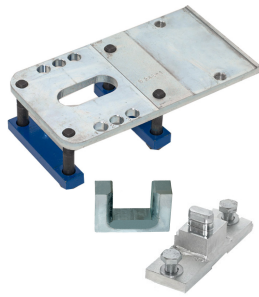
131-112-5350 T94 Pulling clamp kit

New England Collision Equipment, Inc

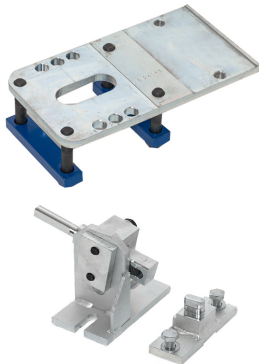
2008 price List

list
Price

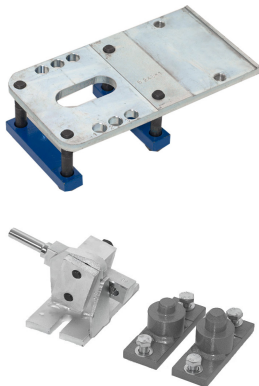
Our
Price



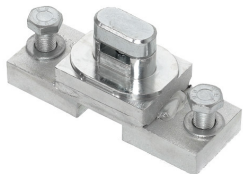
131-114-8303 Mounting Plate Qty (4)
131-114-8170 B276 Support Qty (4)
131-114-8201 B248 A1 Holder for BMW Qty (4)
total



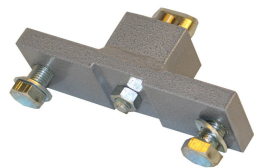
131-114-8303 Mounting Plate Qty (4)
131-114-8305 B331 BMW clamp with side shaft Qty (4)
total



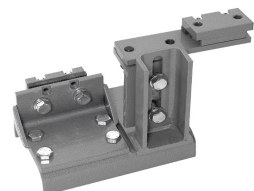
131-114-8303 Mounting Plate Qty (4)
131-114-8304 Mercedes Clamps with side shaft Qty (4)
total



131-114-8310 B332 Audi Chassis clamp Qty (4)



131-114-8306 B333 Corvette Chassis clamp Qty (4)



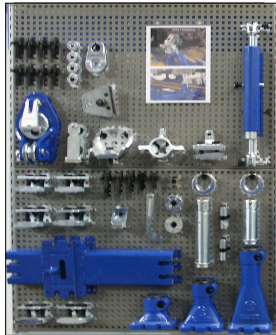
131-010-8330 B223 Honda Chassis clamp Qty (4)

New England Collision Equipment, Inc
2008 price List

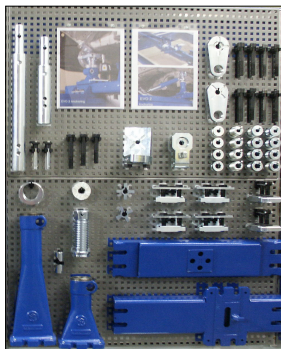
list
Price

Our
Price

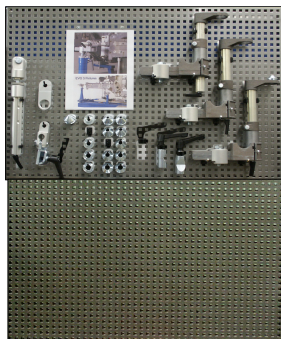
EVO SYSTEM



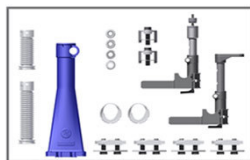
151-500-1400 EVO Basic system **EVO1**
 131-087-4211 Tool Board set EVO 1 WSE 211



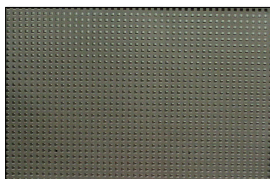
151-500-1410 EVO Extension system **EVO2**
 131-087-4214 Tool Board set EVO 2 WSE 214



151-500-3400 EVO Universal holding/Fixation **EVO3**
 131-087-4217 Tool Board set EVO 3 WSE 217



151-500-1420 EVO 1-3 BMW Kit **EVO BMW**
 131-087-4221 Tool Board set **BMW** WSE 221

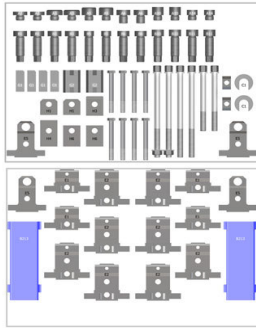


131-087-4110 Tool Board 900 WSB 110

New England Collision Equipment, Inc
2008 price List

list
Price

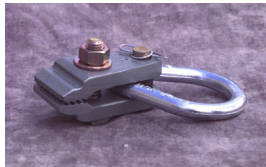
Our
Price



131-087-4230 Tool Board Set B73 1+2 WSB 230
 (tool Board Only with hanging hooks)



2008 Technicians tool board



0054 MINI SPRING CLAMP



0550 Tight opening clamp



0450 Flash clamp



1360 Junior versa hook



1320 Slim line sill hook

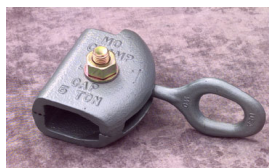


3110 Small flat nose hook
 3120 Small round nose hook
 3130 Large flat nose hook
 3140 Large round nose hook
 3100 Swivel head sheet metal hooks(4)

New England Collision Equipment, Inc
2008 price List

list
Price

Our
Price



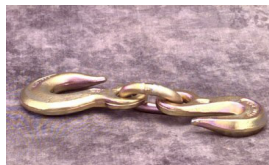
0480 Swivel hook



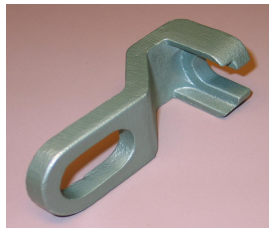
4056 Narrow draw bar with single claw



6313 Ford T hook with 3/8" grab hook



4146 3/8" grab slip combo



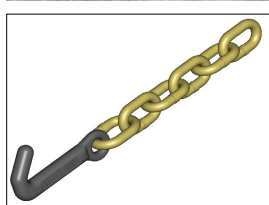
1340 bolt puller



5622 T22 Tower chain 2 tons



5800 G-Clamp



6317 J hook with 5 link chain



6382 Mo flex protective sleeve



6380 Mo flex sling

New England Collision Equipment, Inc
2008 price List

list
Price

Our
Price



6411 Jumbo deep hook only
210070 Vertical bracket
520050 Pin
Total



6355 Multi Pad with Metal plate



931 8ft chain with grab hook



930 Double grab hook assembly



5802 Jumbo G-Clamp



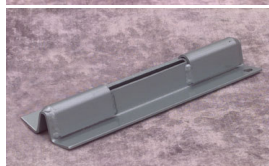
6350 Cable sling



2100 2MA Adapter plate puller



4022 Frame Rack Dyna mo #2



5830 Saddle mate

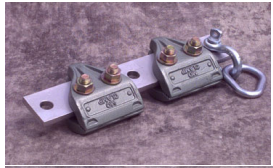
New England Collision Equipment, Inc
2008 price List

list
Price

Our
Price



4020 Four way pull clamp



4010 Frame Rack Unibody clamp



4030 Three way pull clamp



4035 Angle bracket



4047 Frame rack draw bar with loop



0551 Original Tight opening clamp



4065 All angle clamp



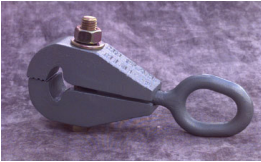
5623 Hinge plate puller 3 tons

New England Collision Equipment, Inc
2008 price List

list
Price Our
Price



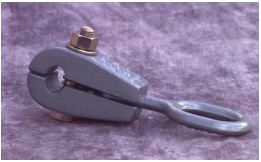
0200 C clamp



0250 Mini C



0670 Baby Box



0205 Dyna mo C



0305 Dyna mo JR



5616 Door post puller twister 2 tons



6357 Multi-pad power press kit



1250 Panel Puller



1800 Tac-n-pull with pull plates



0805 Tac-n-pull plate kit
 (10-1", 5-1-1/2", 5-3" plates)

0801 Pull plate for tac-n-pull 1"

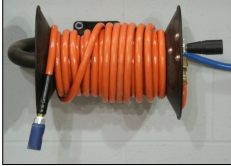
0802 Pull plate for tac-n-pull 1-1/2"

0803 Pull plate for tac-n-pull 3"

New England Collision Equipment, Inc
2008 price List

list
Price

Our
Price



Hose Reel with hose